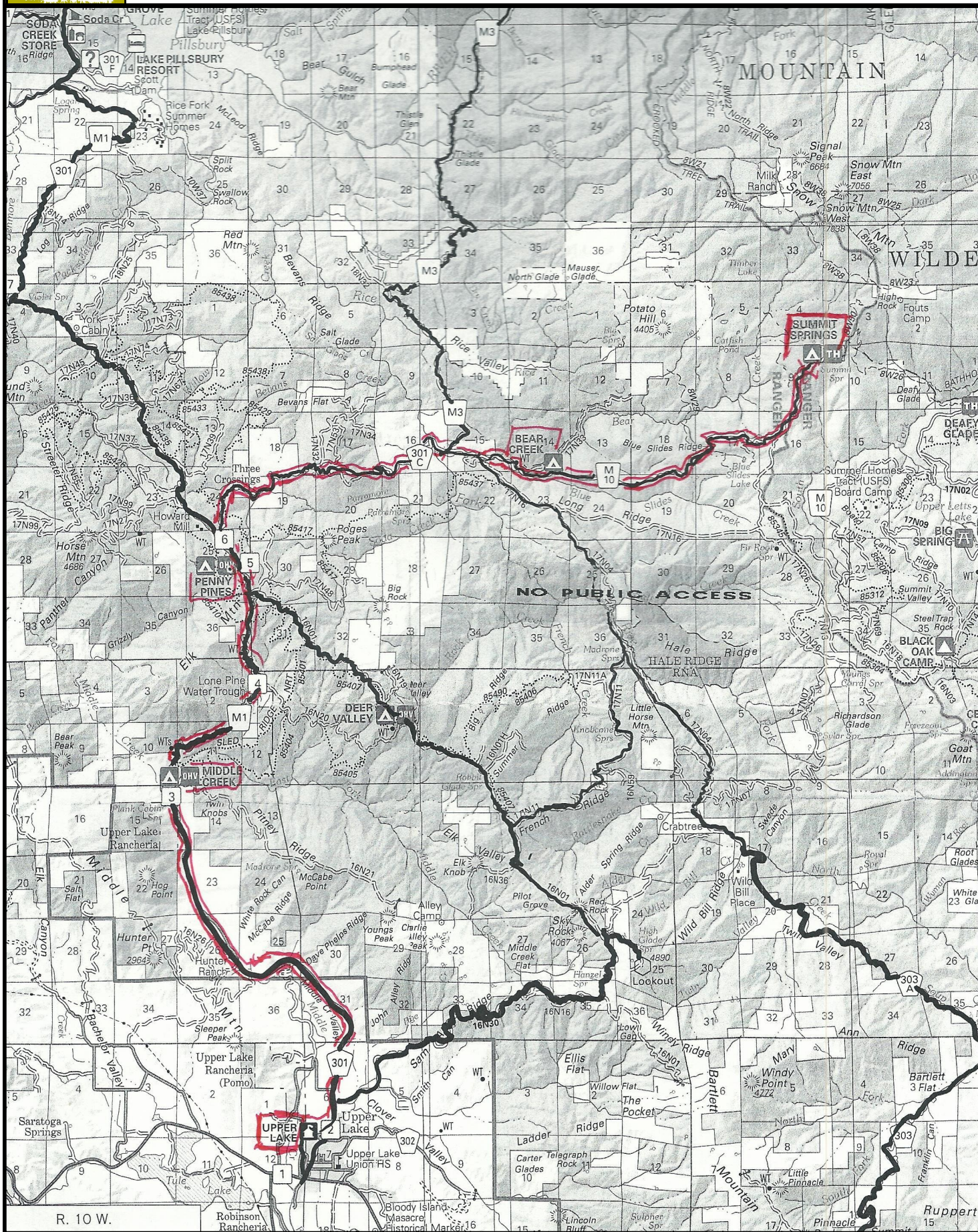




Tallman Hotel to Summit Springs Trailhead and Snow Mountain

Elk Mountain Rd. (M1) to M10 past Penny Pines

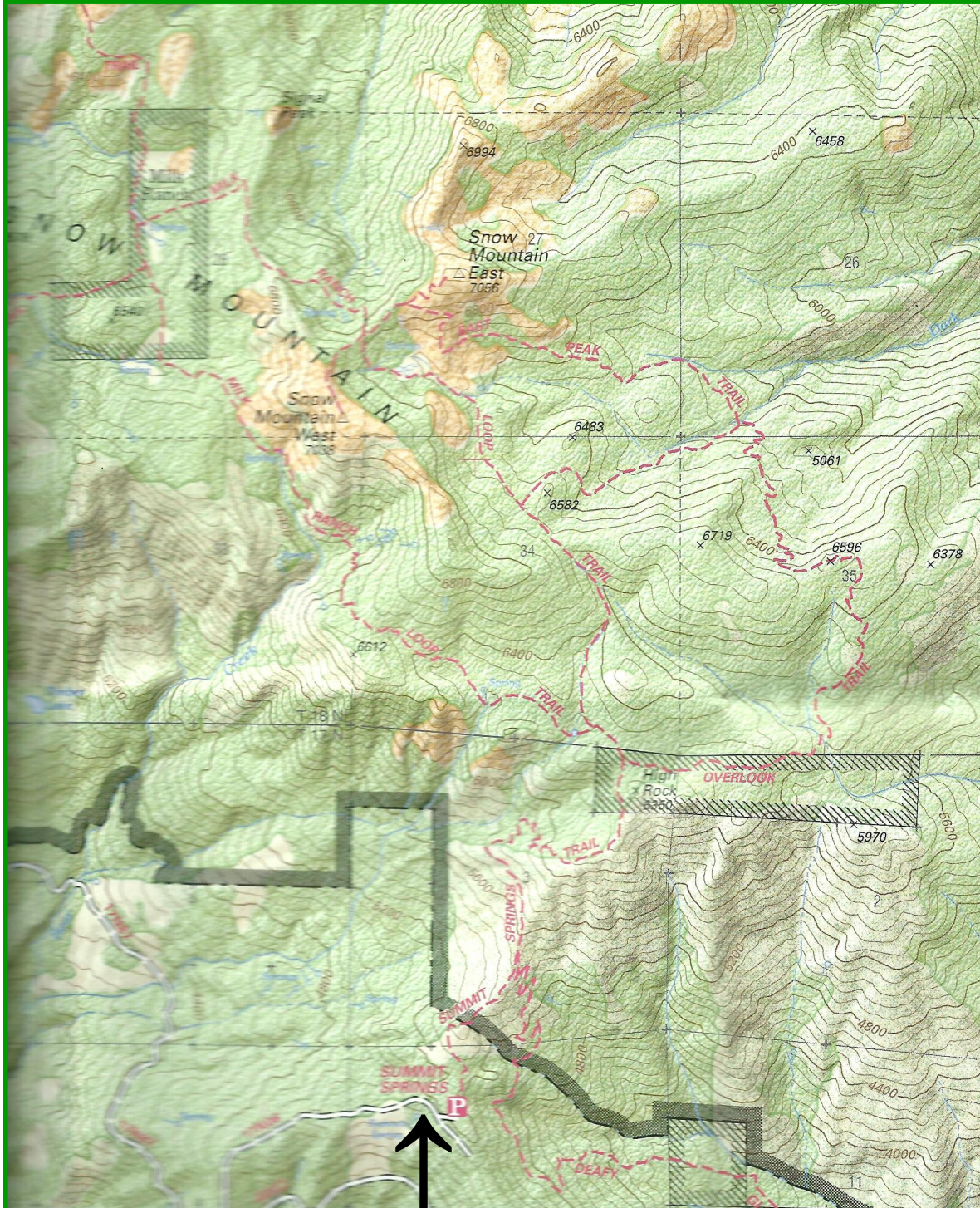
Allow 1.5 hours to trailhead ~ 4 wheel drive recommended ~ stream crossings





Snow Mountain Trails

From
Summit Springs Trailhead



Summit Springs Trailhead